

ZINC-TITANIUM

Modern variety of metal with traditions





Zinc-titanium is produced according to EN988 standard, in two sorts of different surface finish:

- **NATURAL** – metallic and shining surface, which will gradually turn into light grey matt patina resulting from the influence of atmospheric conditions,
- **PRE-AGED GREY** – matt, light grey patina surface created as a result of chemical reaction in a technological process. It is recommended to use pre-aged material on exposed elements like façades.
- **PRE-AGED CARBON** – our new sort of pre-aged material the colour of graphite-black which is received from the complex technological process. The contrasting colour of the material and bright colours makes buildings unique. It compounds well with other materials (for example slate).

Zinc-titanium a modern material produced of the highest purity zinc SHG 99,995% with additions of copper and titanium. Modern technology guarantees very good physical and mechanical properties and allows for a wide range of application in the building industry.

Zinc-titanium advantages:

- durable for over 80 years,
- corrosion resistant,
- does not require maintenance,
- may be easily joined and formed,
- excellent for soldering,
- light and non-flammable,
- 100% recyclable.

Creating a protective layer under the influence of atmospheric conditions, that is typical for zinc, zinc-titanium has incredibly long-life use and requires practically no maintenance. Upon exposure, a surface patina develops on the zinc, consisting of oxides and basic zinc carbonate.



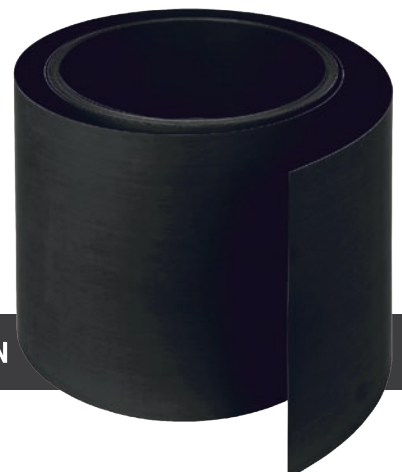
NATURAL



PRE-AGED GREY



PRE-AGED CARBON





Assortment

- sheets 1000 x 2000 or 3000 mm
- coils width 100 (or less for special requirements) – 1000 mm (weight from 100 to 4700 kg)

thickness sheet/coils (mm)	weight (kg/m ²)
0,55*	4,0
0,60	4,3
0,65	4,7
0,70	5,0
0,80	5,8
1,00	7,2

* sheets only

Variety of applications

Due to its perfect forming flexibility zinc-titanium meets the most complicated requirements of modern architects design and can be used in the renovation of historic buildings.

Zinc-titanium is mostly applied in the followings systems:

- double standing seam or angled standing seam,
- strip,
- small-size elements (files, shingles),
- special forms: panels, cassettes, corrugated profiles.

Application in architecture

Zinc-titanium may be used on sloping surfaces with the more than 3° inclination and with various shapes (straight, convex, concave).

Applications:

- roof,
- façades,
- flashing,
- rainwater systems.





ZM SILESIA SA
ul. Konduktorska 8, 40-155 Katowice
tel. +48 32 35 87 400
fax +48 32 25 98 331
biuro@silesiasa.pl, www.silesiasa.pl



References



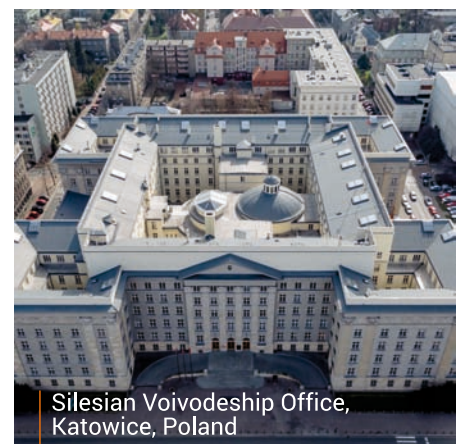
University of Rzeszow, Rzeszow, Poland



Office building, South Korea



Apartments Jaskowa Dolina
Gdansk, Poland



Silesian Voivodeship Office,
Katowice, Poland